





Perks of the park...



Here at Worton Park, we firmly believe in creating a place of work that doesn't give that 'another day at the office' feeling. Our values are rooted within the land and wildlife around us and we make sure that this filters through to all decisions made on the park.

Whether that's supporting the local wildlife by installing bat and bird boxes, creating a community allotment for park tenants, or increasing the number of electric vehicle charging points, there is always a project in the works.

Our aim is to create an environment where both nature, people and businesses are able to thrive. Fusing bright modern work spaces with a tranquil rural setting and providing onsite facilities such as the tennis court and artisan café, to give the option of a more relaxed workplace setting. Creating the ideal opportunity to take time away from the screen and unwind, enabling you to find the all important balance.

With that in mind, here are just some of the perks you can enjoy on Worton Park...





WORTON KITCHEN GARDEN

A hidden gem, this stunning seven acre market garden in the heart of the park is not to be missed. Worton Kitchen Garden have created the perfect place to take some time out, delight the senses and stock up on some exceptional homegrown wares.

A visit to their farm shop and glasshouse restaurant never disappoints; whether you're sampling their exquisite seasonal culinary creations, choosing from a cornucopia of freshly picked produce, or simply taking a stroll through their wonderfully wild cottage garden, there's always something new to take in. Visit their website for more information or contact Simon to book a table - 07710 634631.



WILDLIFE AT WORTON

Creating a space that works in harmony with nature is at the forefront of our values. With the sprawling fields, lakes and ponds that make up the park, we are extremely lucky to play host to an abundance of flora and fauna. There are a number of footpaths in and around Worton Park, which are perfect to explore the surrounding countryside on lunchtime excursions and spot some of the wonderful wildlife that surrounds us. We like to let nature rule the roost, so please stick to the footpaths!



SWIMMING POOL AND POOLSIDE CAFE

Our heated outdoor pool (with a poolside shower and toilet) is open for our park tenants to enjoy on a seasonal basis; available for use between the hours of 07:00-08:30, 13:00-14:00 and 17:00-18:00.

Directly next to the pool you'll find The Coffee Shack. Perfect for breakfast, lunch or a post-dip refreshment, you'll find fresh UE coffee, bacon baps and a delicious selection of hot and cold food. Open Mon-Fri, 08:00-16:00.



Game, set, match!

Our tennis court is open for use all year round from dawn until dusk. Find the entrance of the court just by the pond, using the pathway from the South Car Park. Use on a first come, first serve basis (pardon the pun!).



Howzat?

Gary Palmer's prestigious Cricket Lab is situated next to the tennis court. Gary has coached multiple cricket legends and is currently working with Alistair Cook, former England Captain. For more info visit www.ccmacademy.co.uk



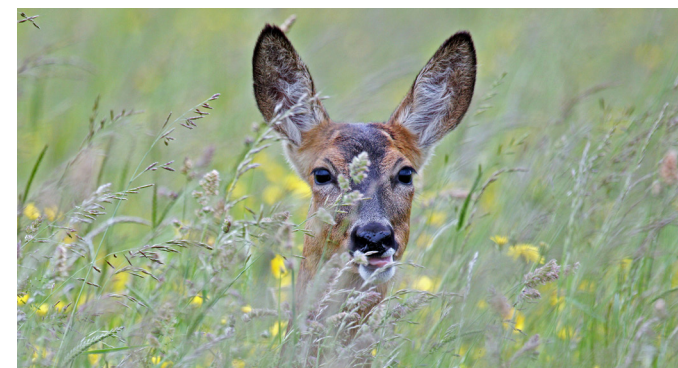
On your bike!

With sustainability at the heart of Worton Park, we want to make it as easy as possible for people to make greener choices, therefore we have ensured there is plenty of bicycle storage situated on site for anyone wishing to cycle to work.



Woodland Walk

Take your lunch al fresco and dine at our picnic spot tucked away in the middle of our woodland trail. Starting from the pond, glimpse the lake and it's plethora of water birds through the trees, or spot our signature wooden reindeer!





WORTON PARK, CASSINGTON, WITNEY, OXFORDSHIRE, OX29 4SU

TELEPHONE: 01865 882644 EMAIL: INFO@WORTONPARK.CO.UK

VERSION I
INFORMATION CORRECT AT TIME OF DISTRIBUTION - JANUARY 2023